

THURSDAY JANUARY 16, 2025

Overview of Grain Belt Express

Presentation to Members of the
Kansas State Legislature

Invenergy

Introducing Invenergy

AN ALL-OF-THE-ABOVE ENERGY SOLUTIONS PROVIDER



PROVEN TRACK RECORD

207

PROJECTS

Developed

33

GIGAWATTS

Capacity Developed

12.7

MILLION

Homes Powered

\$65

BILLION

Completed Transactions

Invenergy

Invenergy: A Kansas Energy Partner

2010

Invenergy began development of its first energy project in Kansas

21

Full-time operations & maintenance employees

\$30 MILLION

Invested annually in Kansas

Invenergy



“About two-thirds of the Buckeye technicians are former students of Cloud County Community College's wind energy technology program in Concordia.”

Hays Post, May 7, 2024

Invenergy employs 13 Kansas workers at its Buckeye Wind Energy Center

An Energy Solution For America's Heartland

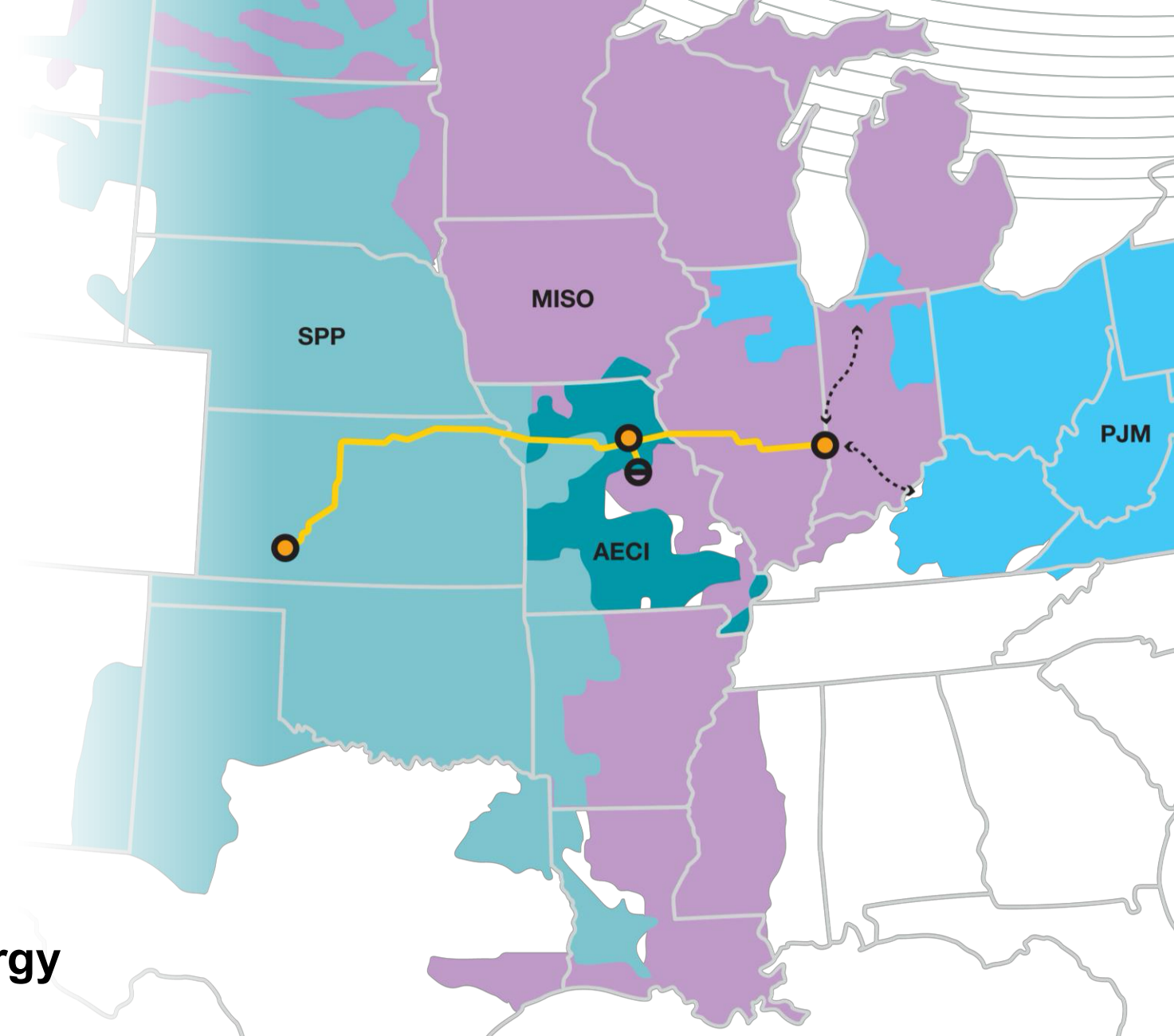


Grain Belt Express

An Invenergy Project

- **Has followed all KS statutes**
- **KS sees bulk of investment**
- **Sets a new standard for KS landowners**
- **Unleashes the power of KS energy**

Invenergy

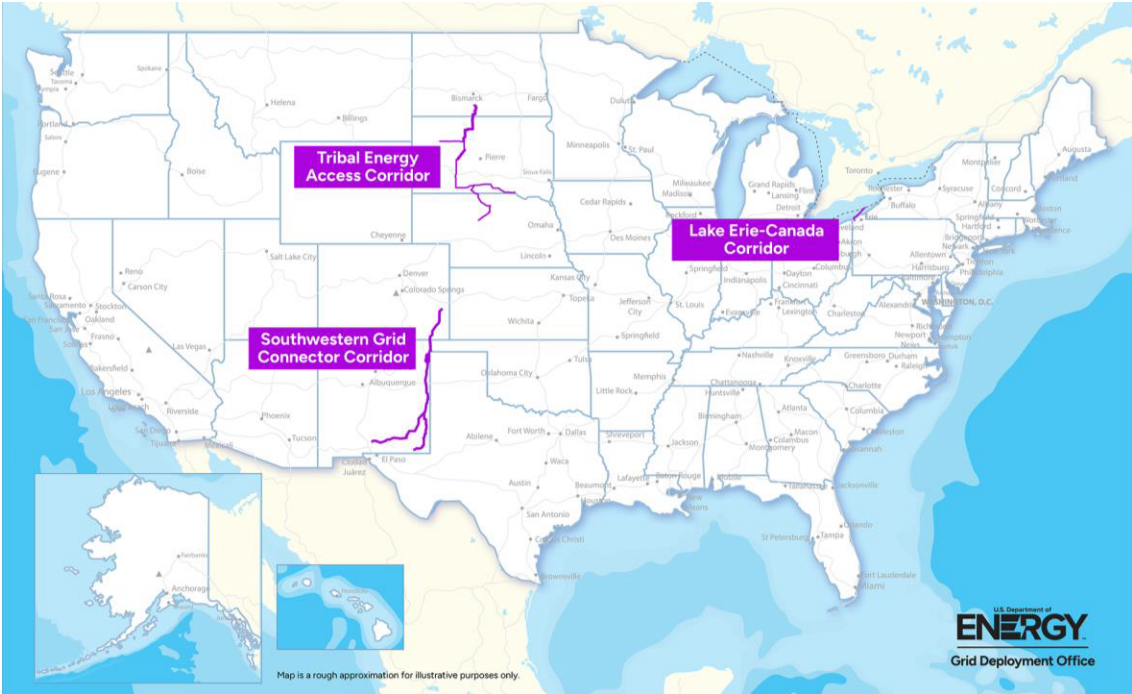


Grain Belt Express is not NIETC

U.S. Department of Energy’s National Interest Electric Transmission Corridor (NIETC) program



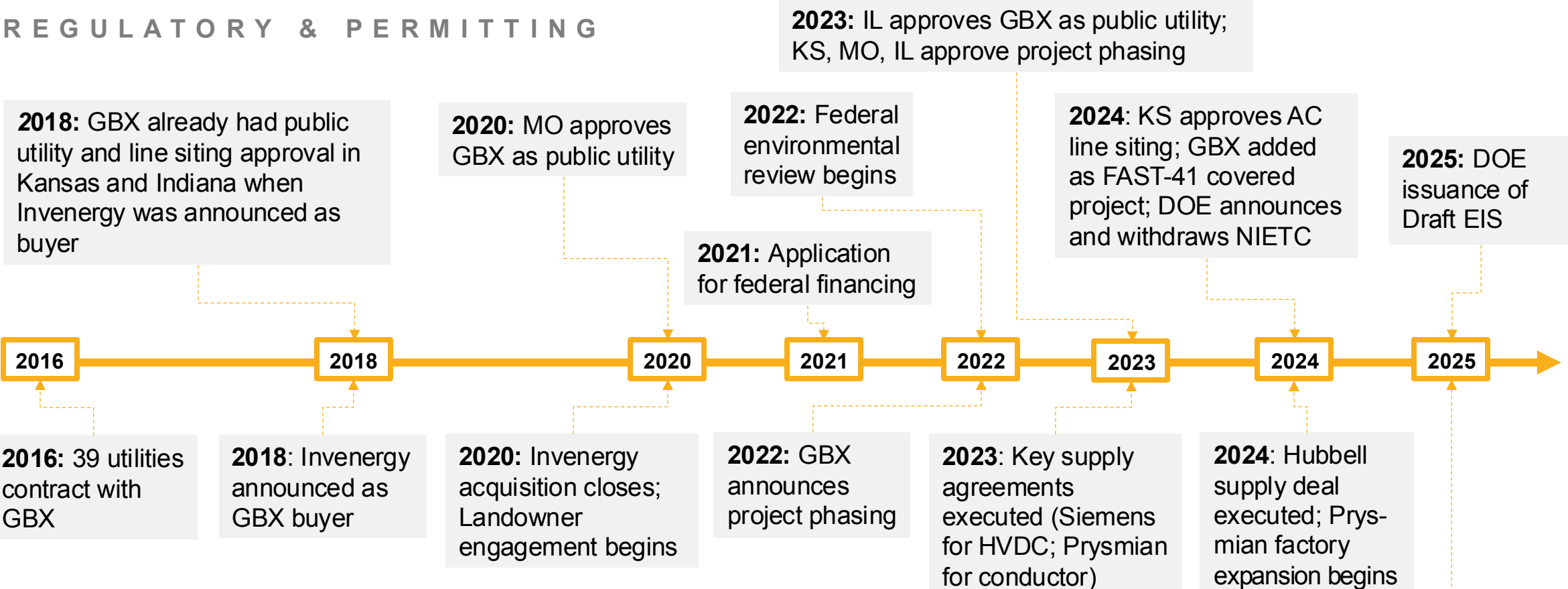
Previous DOE Phase 2 NIETC Map
Issued May 2024



Latest DOE Phase 3 NIETC Map
Issued December 2024
*Midwest-Plains corridor withdrawn, as urged by
Kansas stakeholders and Invenergy*

Grain Belt Express has followed all existing Kansas statutes

REGULATORY & PERMITTING



COMMERCIAL



The bulk of GBX economic investment benefits Kansas

\$8.1 billion

KS economic activity from construction of GBX and enabled generation

19,350 jobs

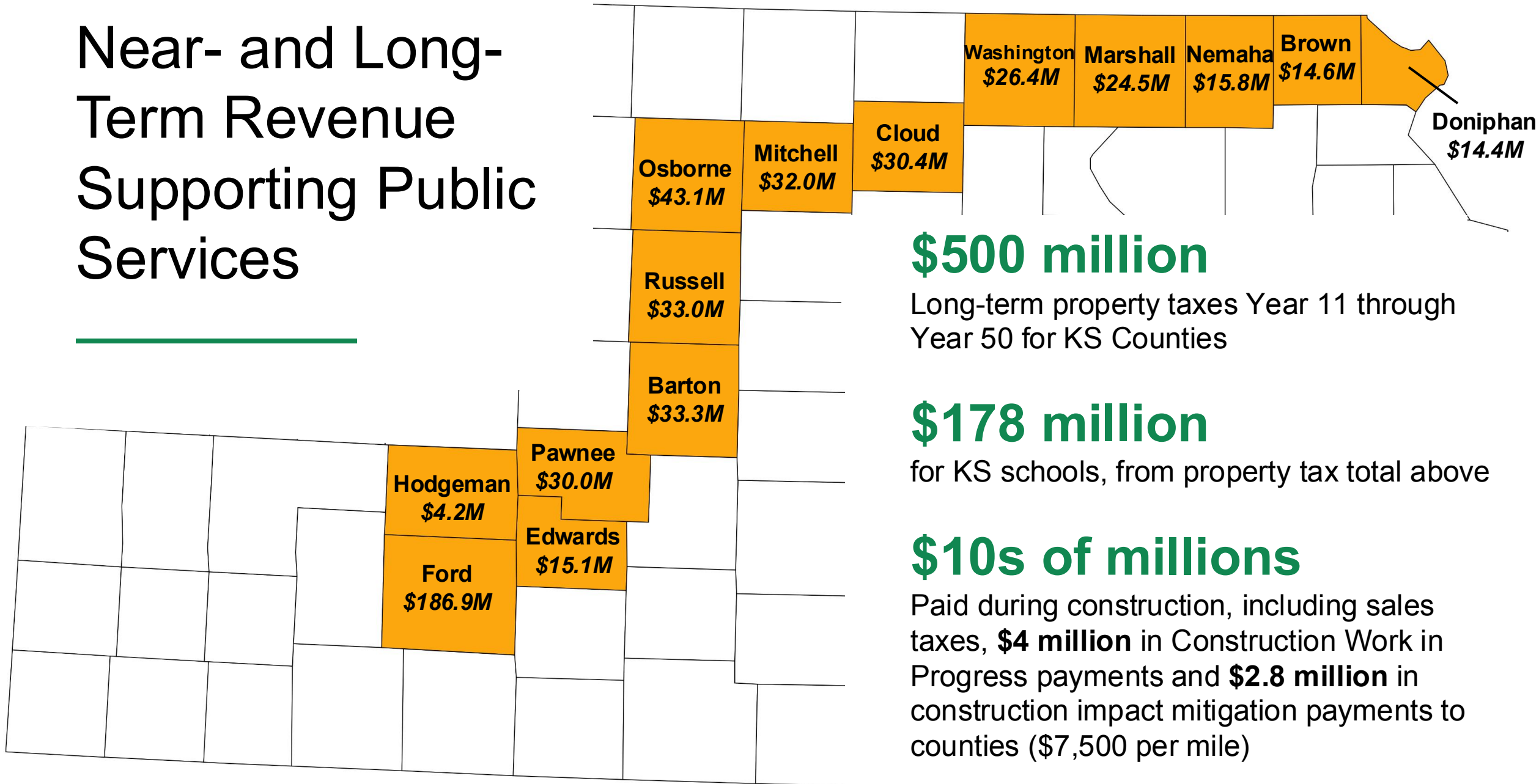
KS direct job creation from construction of GBX and enabled generation (FTE equivalent job years)

“Grain Belt Express will help boost local economies throughout our state and ensure that we can continue to provide domestic energy solutions throughout the Midwest.”

Joann Knight

Executive Director, Dodge City/Ford County
Economic Development Corporation

Near- and Long-Term Revenue Supporting Public Services



\$500 million

Long-term property taxes Year 11 through Year 50 for KS Counties

\$178 million

for KS schools, from property tax total above

\$10s of millions

Paid during construction, including sales taxes, **\$4 million** in Construction Work in Progress payments and **\$2.8 million** in construction impact mitigation payments to counties (\$7,500 per mile)

Kansas energy benefits

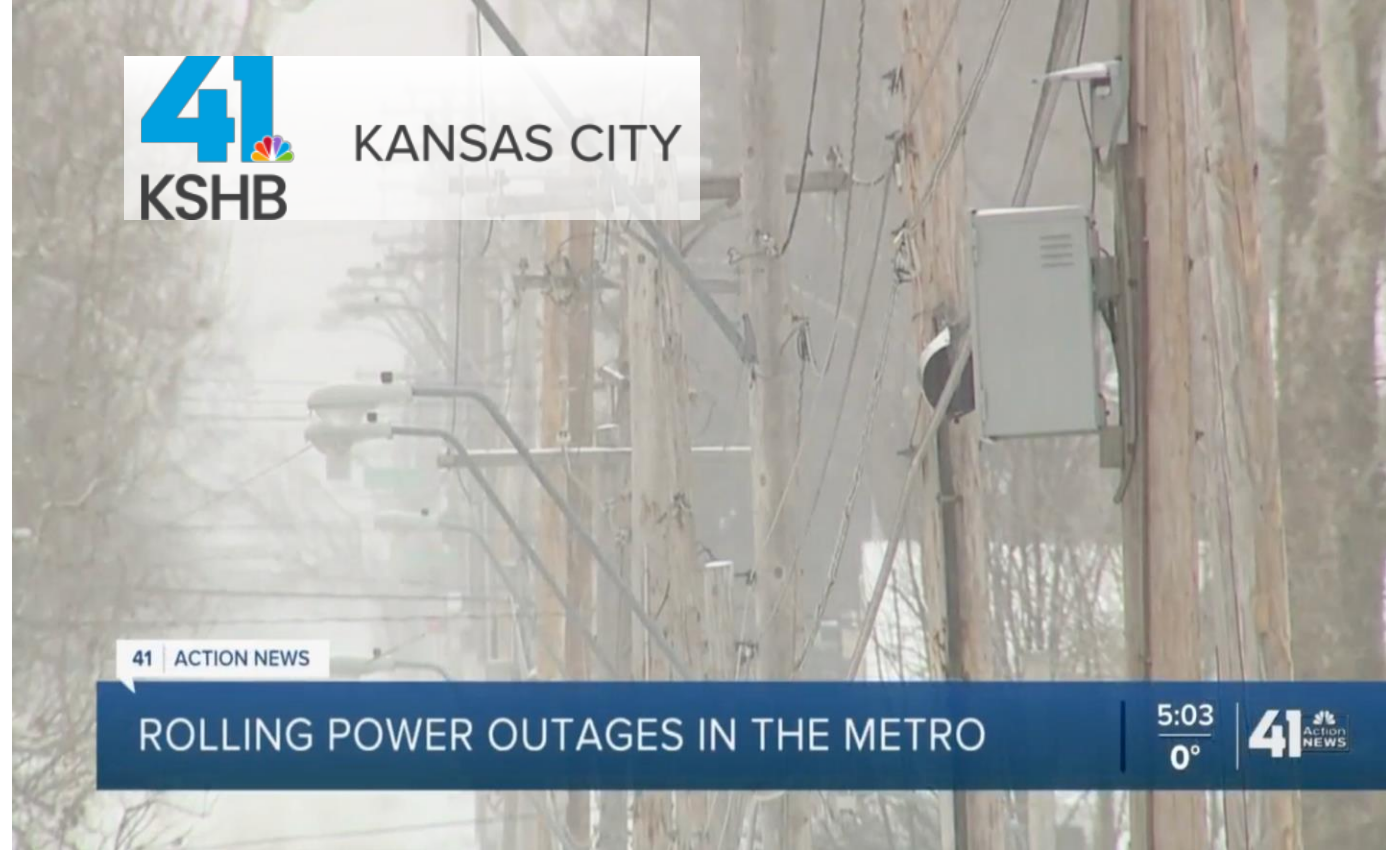
\$1.2 billion

Energy cost savings for Kansas consumers over 15 years

Energy reliability

For Kansas families, businesses, and critical infrastructure

Invenergy



“Lines like Grain Belt Express could have been the savior.”

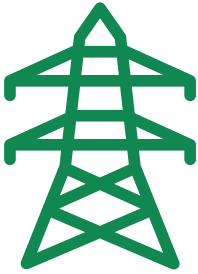
Jay Caspary

Transmission expert and former Southwest Power Pool (SPP) transmission planner on 2021’s Winter Storm Uri

Grain Belt Express sets a new standard for KS landowners



**Strong Rights
& Protections**



**Minimizing
Impacts**



**Competitive
Compensation**

Strong Landowner Rights & Protections

- **Landowner Protocol**
- **Code of Conduct**
- **Agricultural Impact Mitigation Protocols**

“A great example of guidelines and procedures essential for the respectful and fair treatment of landowners, as well as mitigation of impacts to agricultural land”

Kansas Farm Bureau
filing with Kansas Corporation Commission
citing GBX’s Landowner Protocol

Minimizing Impact

Fewer Lines, Fewer Structures

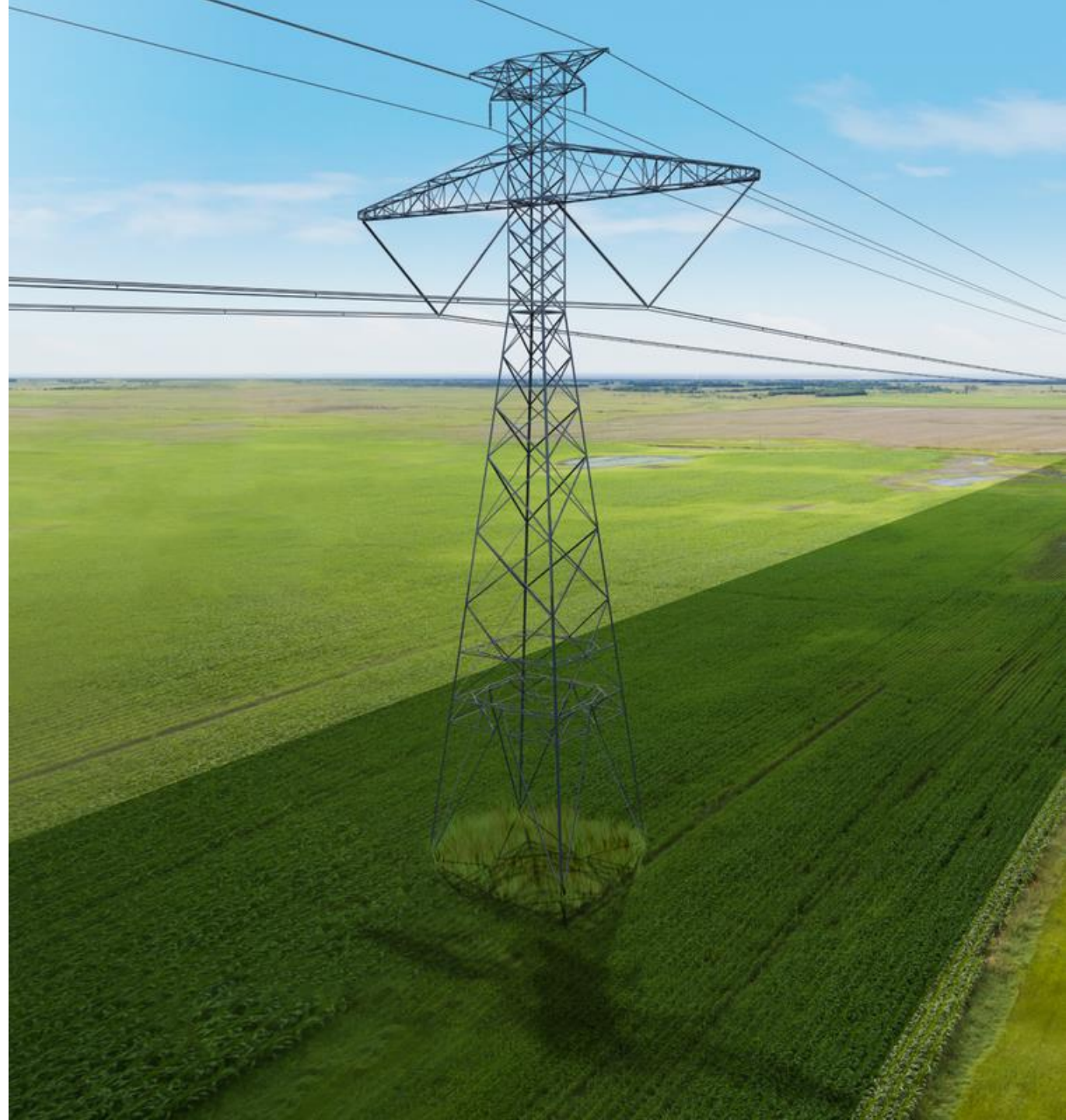
high-voltage direct current (HVDC) requires
1/3 of the right of way as AC technology

150' Right of Way

typical Grain Belt Express right of way
(dark green area in image at right)

<1% of Total Acreage

occupied by footprint of transmission
structures, relative to acreage in easement

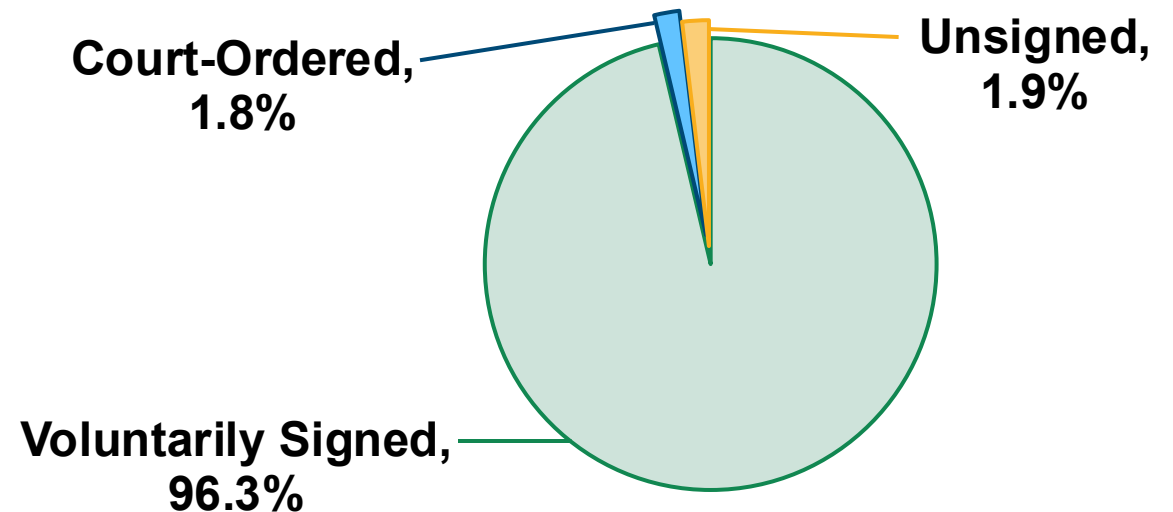


KS landowners: \$12M already paid, \$51M balance due at construction

GBX landowner compensation

- 110% of fair market value of acreage in easement
- Payments of \$18,000 per-typical-structure on property
- Crop compensation
- Annual payment option
- Counter-offers accepted

GBX has completed 98% of Phase 1 main line land acquisition



“The company responsible for this privately constructed project worked with landowners, farmers, and local groups over several years to build consensus and enter into fair agreements for a limited amount of land”

U.S. Rep. Ron Estes, 4th District of Kansas

Kansas power can meet surging U.S. energy demand

16%

increase in national electric demand by 2029

3-4X

increase in power consumption from data centers by 2030

80%

increase in severe weather power outages since 2011

“While Kansas is well-known for ag production, our state also powers the country through energy production... Our nation has the ability to be energy independent again, and Kansas has a role to play in accomplishing that mission.”

Senator Jerry Moran, *Marysville Advocate*, “Time to Unleash Kansas Energy”, October 2022



Grain Belt Express

An Invenenergy Project

Thank you

[Invenenergy.com](https://www.invenenergy.com)

[GrainBeltExpress.com](https://www.GrainBeltExpress.com)

- **Has followed KS statutes**
- **KS sees bulk of investment**
- **Sets a new standard for KS landowners**
- **Unleashes the power of KS energy**

Invenenergy

Join us.    