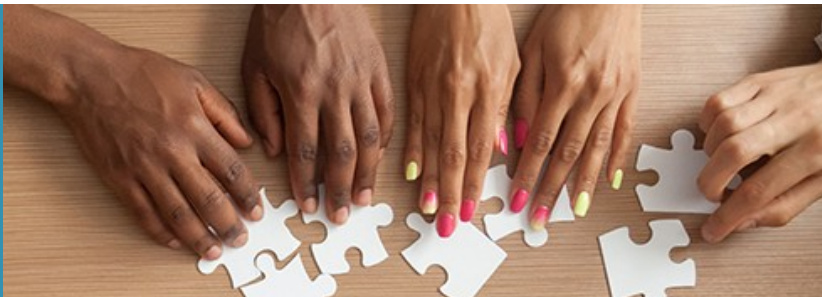


ABOUT



DIVERSITY & INCLUSION

Our Commitment to Diversity and Inclusion

Foulston is committed to cultivating an environment that embodies the diversity of the communities in which we practice. Multiple viewpoints provide greater opportunities to generate creative solutions. We are committed to fostering an atmosphere that is inclusive of individuals without regard to race, color, national origin, religion, sex, pregnancy, age, disability, military or veteran status, sexual orientation, or gender identity or expression. We embrace different experiences, perspectives, and ideas. We believe that diverse teams are a necessary component of providing excellent legal and client services by helping us better understand our clients and their needs. We believe that a diverse workforce adds a richness to our professional community that might not otherwise exist. Indeed, the Wichita Business Journal in 2018 recognized Foulston as a “Leader in Diversity.”

History of D&I at Foulston

Foulston has always valued diverse ideas and opinions. The firm leads and actively engages with the diversity committees of the bar associations where we practice. For example, in 2006, Foulston senior partner Mike Stout played a key role in formulating the Wichita Bar Association’s Diversity Initiative action plan, which focuses on the recruitment and retention of under-represented groups of staff, associates, and partners in Wichita firms. Foulston signed this action plan and has taken significant steps to implement its recommendations.

Women play a key role at Foulston. For more than 45 years, Foulston has mentored and promoted female attorneys and staff members, including placing women in key leadership roles. Foulston female attorneys have had incredible legal careers at the firm and beyond. For example, Gloria Farha Flentje, a former Foulston partner, served as the first female president of the Wichita Bar Association and the first general counsel of Spirit AeroSystems. Likewise, retired Justice Carol Beier, also a former Foulston partner, served on the Kansas Court of Appeals and later was appointed to the Kansas Supreme Court.

WICHITA

1551 N. Waterfront Parkway, Suite 100
Wichita, KS 67206-4466
Phone: 316.267.6371
Fax: 316.267.6345

TOPEKA

822 S. Kansas Avenue, Suite 200
Topeka, KS 66612-1203
Phone: 785.233.3600
Fax: 785.233.1610

KANSAS CITY

7500 College Boulevard, Suite 1400
Overland Park, KS 66210-4041
Phone: 913.498.2100
Fax: 913.498.2101