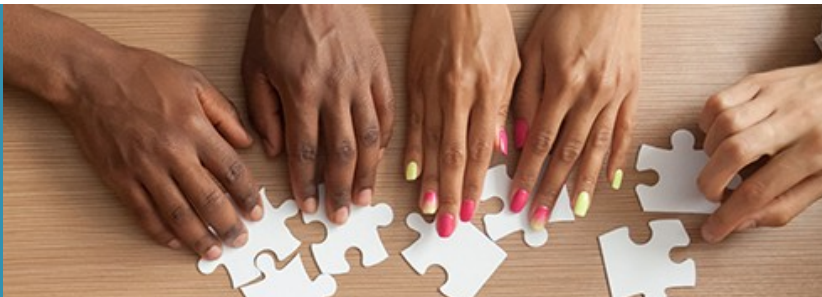


ABOUT



DIVERSITY & INCLUSION COMMITTEE

Foulston D&I Committee

The D&I Committee meets, reviews, and recommends changes to the firm's structure and its practices to ensure that we continue to cultivate the values of diversity and inclusion in our firm. For example, the D&I Committee led the effort to revise the firm's parental leave guidelines to ensure that our policies accommodate and support the needs of all attorneys and staff – male and female – as they make personal decisions regarding their families.

The D&I Committee also plans and executes programming designed to increase the awareness and understanding of our team members. We strive to provide forums for meaningful contemplation and discussion of important issues surrounding diversity and inclusion.



The D&I Committee is co-chaired by Amy S. Lemley and C. Edward Watson, II. Amy led the firm's general litigation practice for many years and was the first female attorney in Kansas elected as a Fellow of the American College of Trial Lawyers, where she currently serves on several national level committees. Throughout her career, Amy has been involved in organizations that promote social justice and the fair treatment and equitable treatment of all – including service on the ABA Commission on Women, the Board of Directors of Kansas Legal Services, the Kansas Client Protection Fund Committee, and the Mental Health Association of South Central Kansas.

[Back to Diversity & Inclusion](#)